

Closed Loop Recycling



We're committed to creating a future where it's easier than ever for companies to close the loop when it comes to waste polythene, and to make the process as second nature as recycling paper and paper glass has become.

We passionately believe the best use for polythene after its first use, is to be used as something useful once again which is why we invested in closed loop recycling.

The process of recycling polythene using this method is a sustainable and future-proof plan for an ongoing solution to protecting the earth's finite natural resources.

Polythene Closed Loop Recycling Process



Closed Loop Recycling



Recycle, Reuse

Closed loop recycling is the process where your waste polythene is returned back to its raw pellet form. The recycled pellets are then fed directly back into the manufacturing process to produce a new recycled packaging product. The new product is also recyclable in the same way continuing the loop.

There is a huge shortage of waste polythene scrap in the UK, but the demand for recycled polythene products is growing. To encourage more companies to close the loop and stop this valuable material ending up in landfill – we'll collect and buy your scrap polythene.

How does the service work?

We'll supply you with a branded crate (explaining what can and can't be recycled) in which to collect all of your polythene waste and then when it's full we'll arrange a convenient time to collect it from you - saving you collection and delivery costs!

Once it's been weighed and graded we'll give you a price for what it's worth and you can rest assured that your waste will be manufactured into a brand new packaging product.

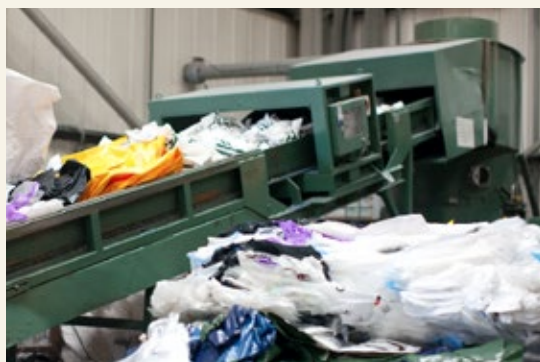
Sustainable Solutions

Polythene is a finite and incredibly valuable resource but thanks to closed loop recycling dependency and demand on new virgin product from the earth is being reduced.

Every year more than 2,500 tonnes, or 500 pallets of polythene scrap material, is recycled using Duo's closed loop recycling system. Which results in 2,500 fewer tonnes going to landfill and less oil used for plastic production.

We're constantly investing in state-of-the-art inventions and innovations to ensure polythene packaging and manufacturing is sustainable for generations to come.

Find out how easy it is to introduce closed loop recycling in your business. Contact us on **0161 203 5767** or email us at enquiries@duo-uk.co.uk.



“Every year more than 2,500 tonnes, or 500 pallets of polythene scrap material, is recycled using Duo's closed loop recycling system.”

